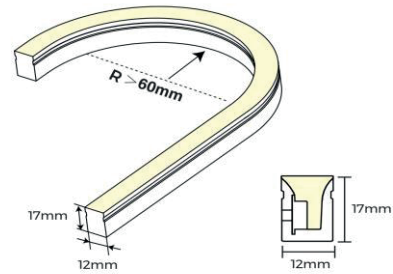


HLF24



Artikel nummer HLF241023CU

elektrotechnische eigenschappen

| | |
|------------------|---------|
| Aansluitspanning | 24V |
| Vermogen | 9,6W |
| Lumen/Watt | 9,6lm/W |
| | |
| | |
| | |
| | |
| | |

eigenschappen behuizing

| | |
|-----------------|------------|
| Afmetingen | CUX12x17mm |
| IP-waarde | IP67 |
| Kleurtolerantie | SDCM<2 |
| Kleur | wit |
| | |
| | |
| | |
| | |

lichttechnische eigenschappen

| | |
|------------------|-----------------|
| Lumenoutput | 510lm |
| Kleurtemperatuur | 2300k |
| Gradenbundel | 120° |
| Kleurweergave | >90 |
| Kleurtolerantie | SDCM<2 |
| Lumenbehoud | 360000 L80B10 |
| Flux code | 44 75 93 95 100 |
| Led type | SMD2835 |
| Aantal leds/m | 120 |
| Dimbaar | PWM |
| | |
| | |

overige eigenschappen

| | |
|----------|--------|
| Garantie | 3 jaar |
| | |
| | |
| | |
| | |
| | |
| | |

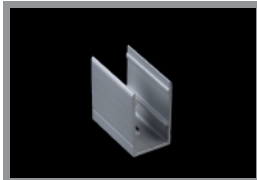
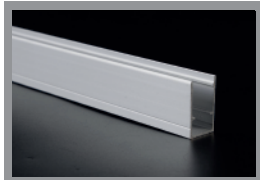
lichtdiagram

project toepassing



accessoires

- HLFMCA montagebeugel met kabeldoorvoer alu 25mm
- HLFAPSA2 profiel opbouw alu 2000mm
- HLFAPFX horizontaal buigzaam profiel opbouw wit 50mm



lastenboekomschrijving
0